

## Bellerive 30-foot high-water setback/HOA Common Area

### Per the City of Coeur d'Alene Rules and Regulations:

#### **What is allowed:**

##### Acceptable plant material

- Native and enhanced landscaping that is drought resistant, low maintenance, and helps stabilize the slope (i.e., clumped grasses, low maintenance shrubs, groundcover)
- Random boulders (no stacked rocks)
- Rock stairs to access the boardwalk shared between two residences ("landscaping features")

##### Houses ("landscaping features")

- Public stairs to access the boardwalk at designated locations indicated on the Plat
- Low voltage path light fixtures for steps along "shared pathway"

##### Indicated on the Plat

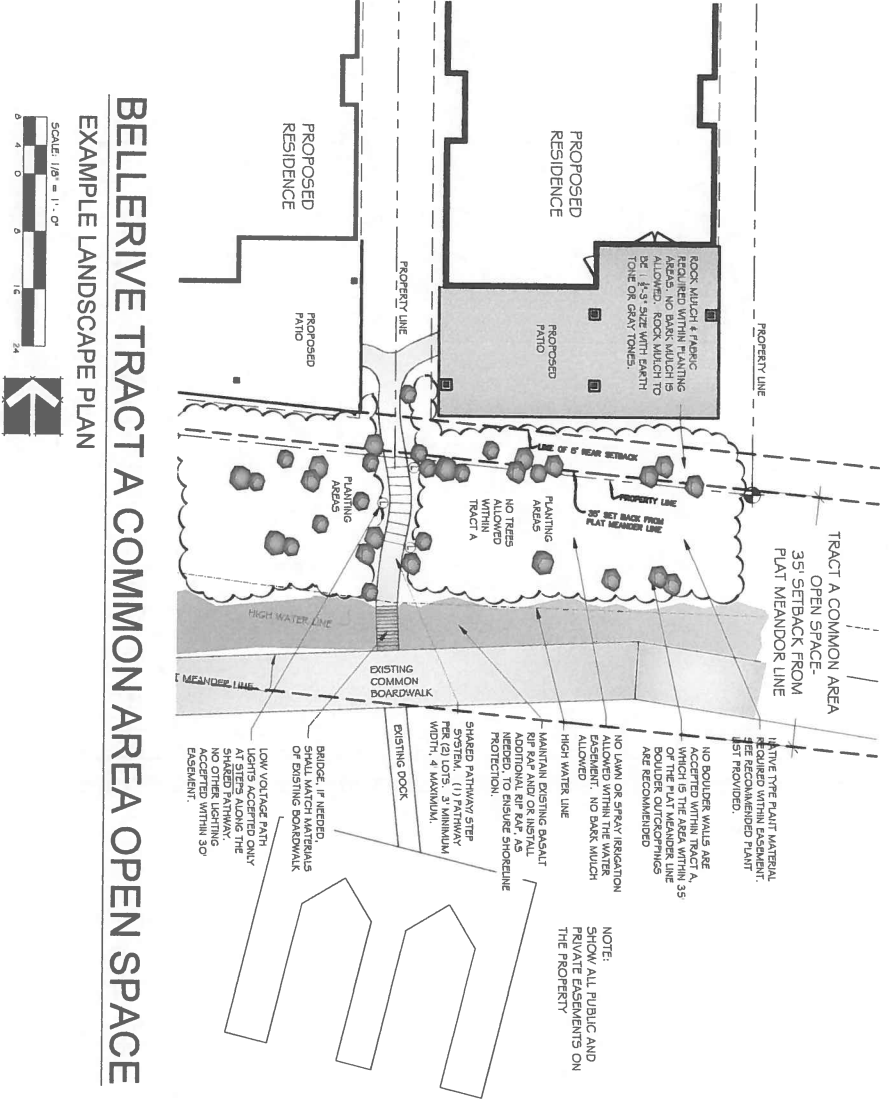
- Rock mulch & fabric is required within beds. Rock mulch shall be minimum 2" size and have earth and/or gray tones.
- Drip irrigation.

##### Deciduous shrubs

- Common name botanical name minimum size

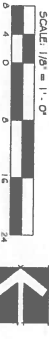
#### **What is not allowed:**

- Retaining walls
- Changing existing topography
- Lawns, trees, and vegetable beds
- Bark, gravel
- Landscape lights (except on shared pathway)
- Overhead spray irrigation or sprinklers
- Use of fertilizer
- Placement or storage of personal items, benches/ seating
- Fire pits, grills, etc.
- Satellite dishes
- Signage (unless it indicates public use and installed by the Association)
- Concrete, metal or wooden stairs
- Handrails on stairs (unless public and installed by the Association)



# BELLERIVE TRACT A COMMON AREA OPEN SPACE

## EXAMPLE LANDSCAPE PLAN



### WHAT IS ALLOWED IN TRACT A:

- NATIVE AND ENHANCED LANDSCAPING THAT IS DROUGHT RESISTANT, LOW MAINTENANCE, AND HELPS STABILIZE THE SOIL (I.E., CLIMBER, GRASS, SAGE, ETC.)
- RAINBOW BOULDERS (NO STACKED ROCKS)
- ROCK STEPS TO ACCESS THE BOARDWALK SHARED BETWEEN TWO TRACTS
- ROCKS (LANDSCAPING MATERIAL)
- PLANTING AREAS TO BE INDICATED ON THE PLAN
- ROCK MULCH & FABRIC IS REQUIRED WITHIN BEDS, ROCK MULCH SHALL BE MINIMUM 2" SIZE AND HAVE DARK AND/OR GRAY TONES.
- REMOVAL OF NON-NATIVE VEGETATION AND NONKIOS WEEDS.
- LOW VOLTAGE PATH LIGHT FIXTURES FOR STEPS ONLY ALONG SHARED PATHWAY.

### WHAT IS NOT ALLOWED IN TRACT A:

- RETAINING WALLS
- CHANGING EXISTING TOPOGRAPHY
- LAND GRADE
- LANDSCAPE LIGHTS (EXCEPT ON SHARED PATH STEPS)
- OVERHEAD SPRINKLER REGULATION
- USE OF FERTILIZER
- FIRE EXTINGUISHERS OR PERSONAL ITEMS, BONGS/BONGS SEATING, FIREWORKS, ETC.
- SATELLITE DISHES
- STORAGE (UNLESS IT INDICATES PUBLIC USE)
- CONCRETE, METAL OR WOODEN STEPS
- HANGERS ON STRIPS (UNLESS USED)

## ACCEPTABLE PLANT MATERIAL

### DECIDUOUS SHRUBS

COMMON NAME	BOTANICAL NAME	MINIMUM SIZE
NINEBARK	FRAXINUS VELUTINA	5 GAL
ELDERBERRY	SAMBUCUS	5 GAL
REYING DOGWOOD	CORNUS SERICEA	5 GAL
RIOUS WILDO	DIWAF MUGO FINE	5 GAL
NINEBARK	FRAXINUS VELUTINA	5 GAL
ELDERBERRY	SAMBUCUS	5 GAL
SPINDA	SPINDA	5 GAL
SALVIA VARIETIES	SALVIA VARIETIES	5 GAL
MAHONIA AQUATICOLUM	MAHONIA AQUATICOLUM	5 GAL
HOOTA KOPPE	HOOTA KOPPE	5 GAL
POTENTIALIA FRUITICOZA	POTENTIALIA FRUITICOZA	5 GAL
RIBES VARIETIES	RIBES VARIETIES	5 GAL
EVERGREEN SHRUBS	EVERGREEN SHRUBS	5 GAL

### ORNAMENTAL GRASSES

COMMON NAME	BOTANICAL NAME	MINIMUM SIZE
FAWNER REED GRASSES	CAULMAGROSTIS X ACUTICOLA	1 GAL
BLUE OAT GRASS	HELOCTICION SPARTENIENSIS	1 GAL
MISCANTHUS VARIETIES	MISCANTHUS VARIETIES	1 GAL
POLYNU GRASS VARIETIES	FINNSSETUM ALPICOLORIDES	1 GAL
LITTLE BULBSTERIA	SCHIZANTHRUM SCOPOLIUM	1 GAL
WORTERGRASS	PALMUM VIRGATUM	1 GAL
NORTHERN SEA OATS	CHRISANTHEMUM LATIFOLIUM	1 GAL
MORDEBASS	MORDEBASS	1 GAL
MAHONIA CARULEA	MAHONIA CARULEA	1 GAL
MILDBASS	MILDBASS	1 GAL
PIE PEEZEE	PIE PEEZEE	1 GAL
GRASS	GRASS	1 GAL
LYRAPHOR FOREST GRASS	LYRAPHOR FOREST GRASS	1 GAL
PERENNIALS	PERENNIALS	1 GAL

### GROUND COVER

COMMON NAME	BOTANICAL NAME	MINIMUM SIZE
VIBRANT PERSISTION	ACHILLEA MILFOLIUM	1 GAL
THICKSED	BRANDENBURGUE	1 GAL
CORNICIA	CORNICIA	1 GAL
CONE FLOWER VARIETIES	LEUCANTHEMUM X SUPERBUM	1 GAL
SHVATA DASY	PHLOX VARIETIES	1 GAL
PHLOX	PHLOX VARIETIES	1 GAL
FALSE INDIGO	BARTISA	1 GAL
JOE PEE WEDD	DIURICHIUM PISTULOSUM	1 GAL
BLACK TRIP SUSAN	DIURICHIUM PISTULOSUM	1 GAL
BLACK TRIP SUSAN	DIURICHIUM PISTULOSUM	1 GAL
ASTER	ASTER VARIETIES	1 GAL

REVISIONS	BY
4-28-17	AR

**CLEARWATER SUMMIT GROUP INC.**  
Landscape Design, Construction & Maintenance  
P.O. Box 6470 Spokane, WA 99217 ph. 509.462.2722 fax 509.464.2343

# BELLERIVE TRACT A COMMON AREA

COEUR D'ALENE, IDAHO 83814

DRAWN BY

CHECKED BY

DATE: 4/19/17

SHEET

**L1**

OF 1